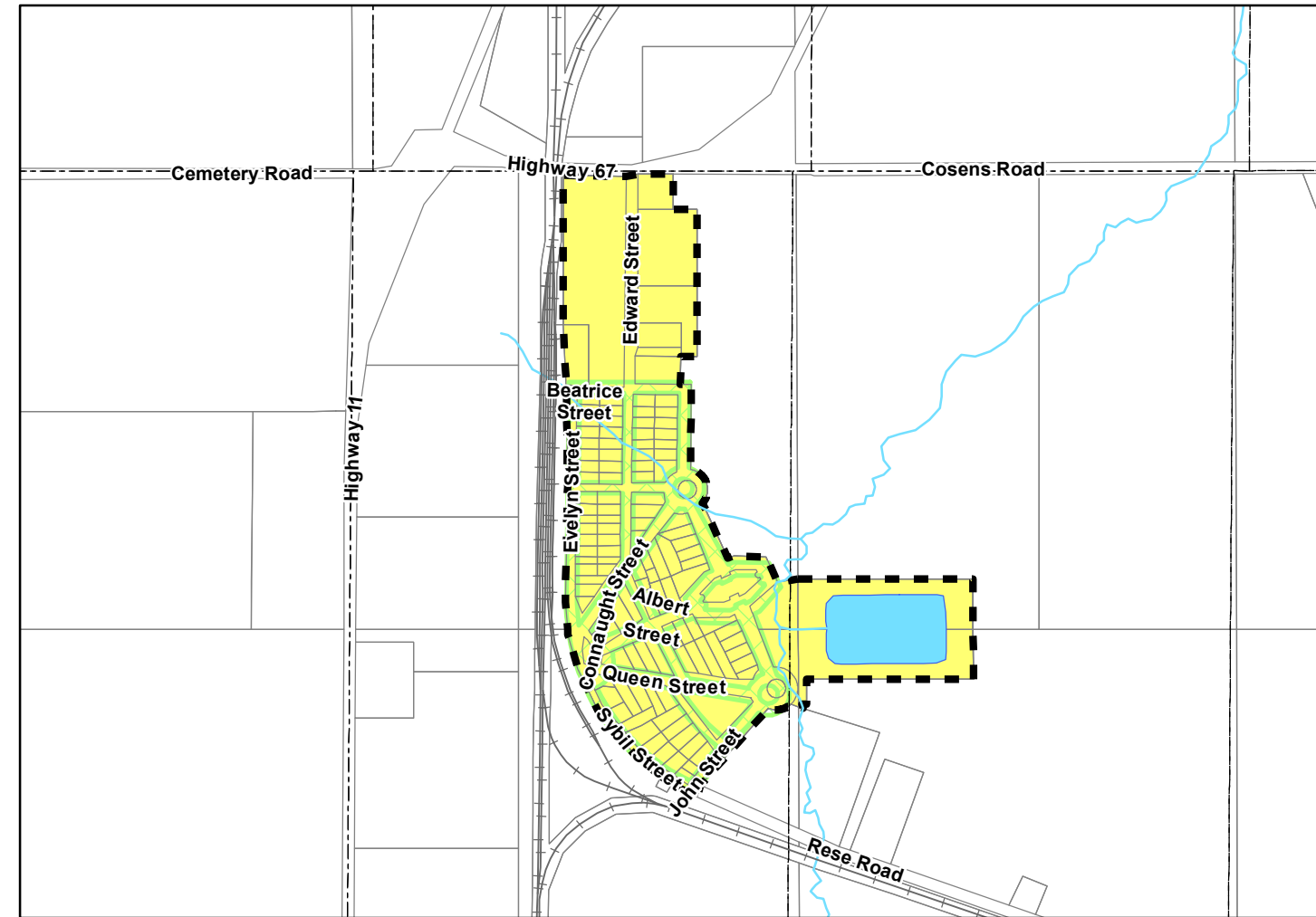
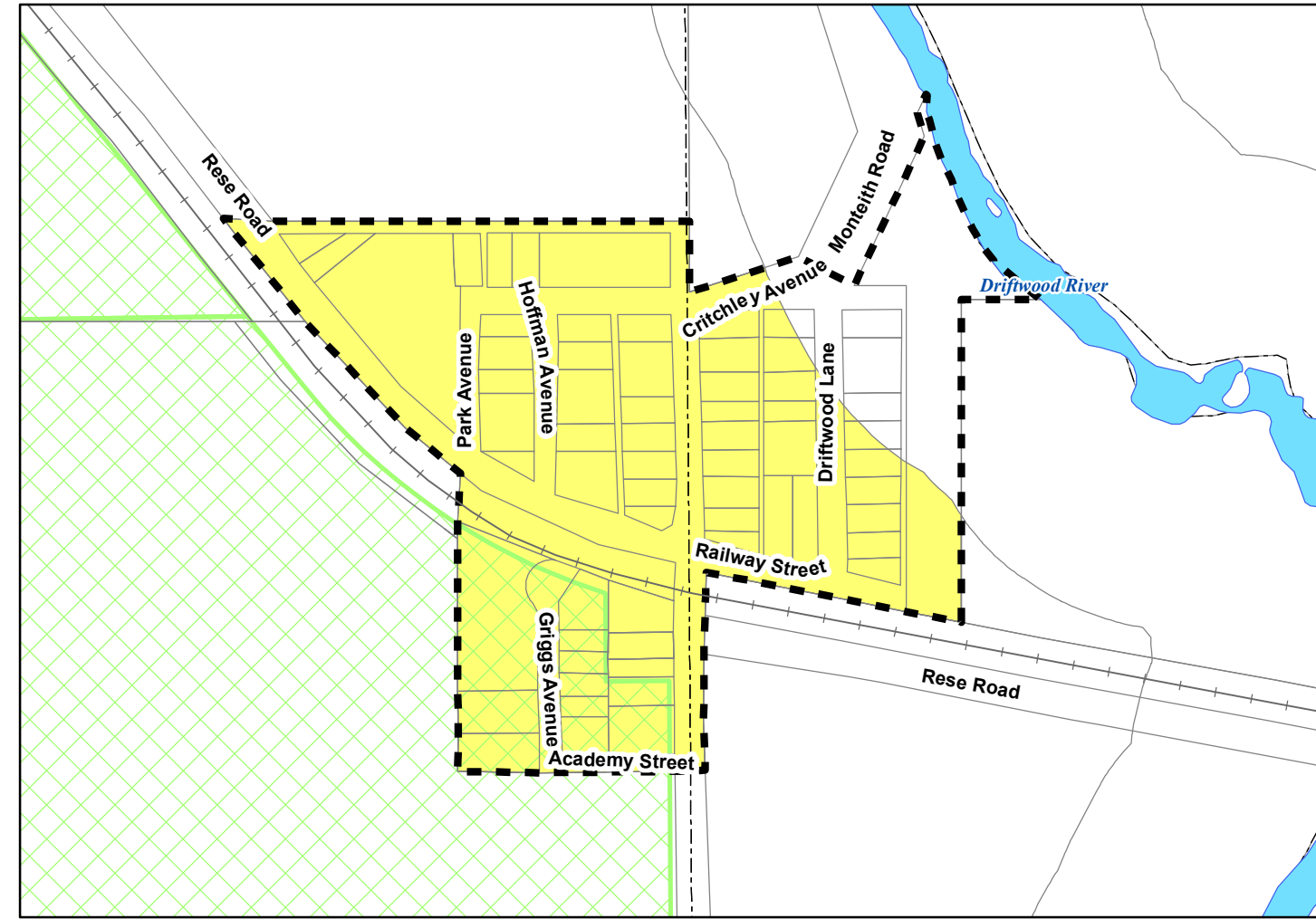


INSET 1 - PORQUIS JUNCTION



INSET 2 - MONTEITH



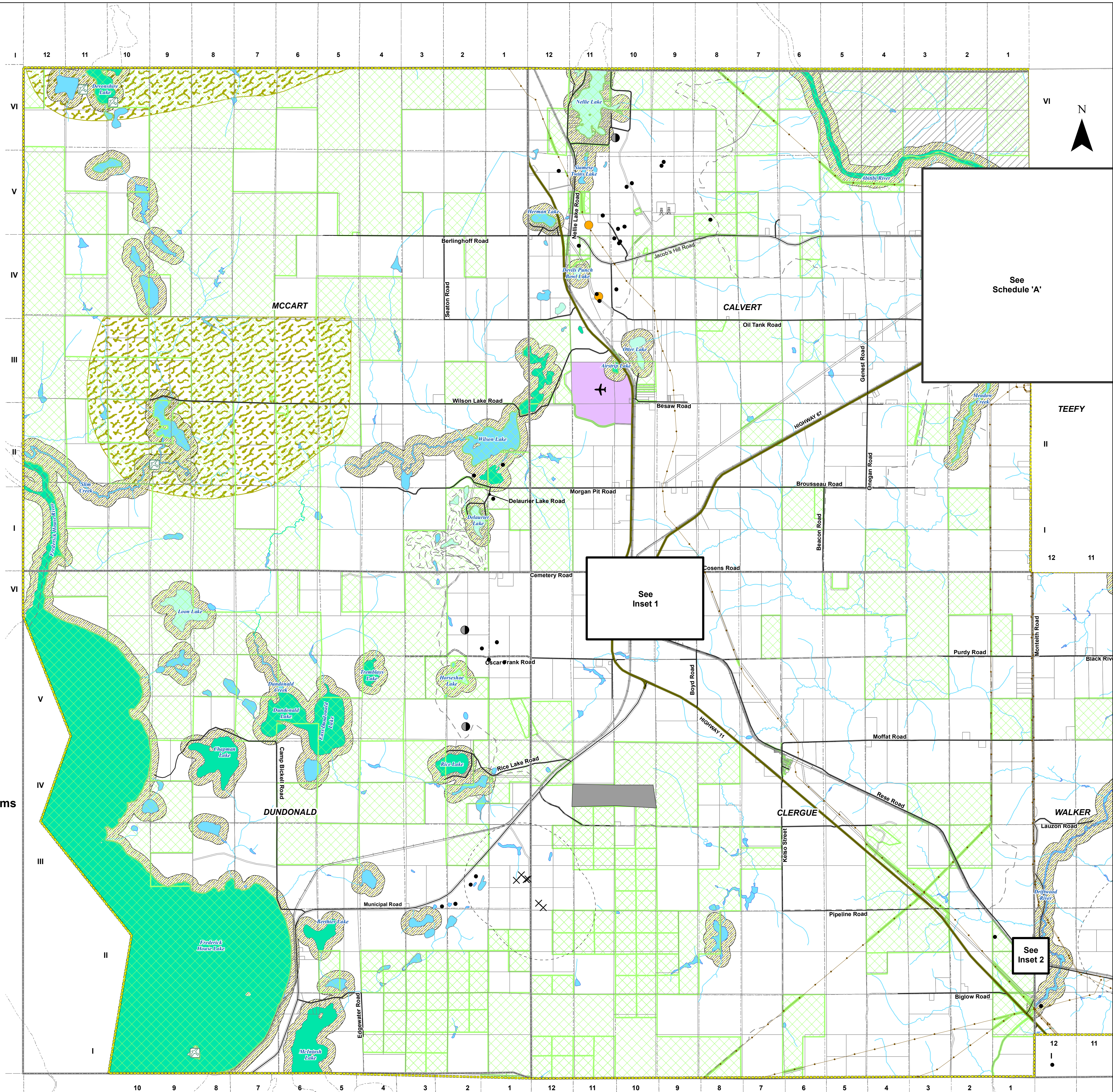
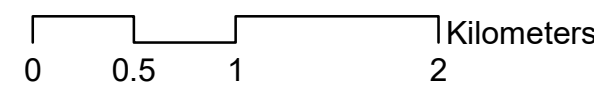
# Official Plan

## Town of Iroquois Falls

### Rural Area West - Schedule 'C'

**Legend**

- |  |  |  |
|--|--|--|
| <ul style="list-style-type: none"> <li> Municipal Boundary</li> <li> Geographic Township</li> <li> Settlement Area Boundary</li> <li> Provincial Highway</li> <li> Municipal Road</li> <li> Private Road</li> <li> ORWN Track</li> <li> Trail Segment</li> <li> Utilities Line</li> <li> Communication Tower</li> <li> Airfield</li> <li> Waterbody</li> <li> Watercourse</li> </ul> | <p><b>Landuse &amp; Constraints</b></p> <ul style="list-style-type: none"> <li> Nesting Sites</li> <li> Abandoned Mines Information System</li> <li> Unrehabilitated Aggregate Site</li> </ul> <p><b>Landfill Sites</b></p> <ul style="list-style-type: none"> <li> Open</li> <li> Closed</li> <li> AMIS 1km Buffer</li> <li> Active Aggregate Site</li> <li> Caribou Range</li> <li> Wintering Area</li> <li> Crown Land</li> </ul> | <p><b>Thermal Regimes of Lakes &amp; Streams</b></p> <ul style="list-style-type: none"> <li> Cold</li> <li> Cool</li> <li> Cold</li> <li> Cool</li> <li> Warm</li> </ul> <p><b>Designations</b></p> <ul style="list-style-type: none"> <li> Village</li> <li> Shoreline</li> <li> Airport Business Industrial</li> <li> Rural</li> </ul> |
|--|--|--|



Data Source: Source Data has been provided by the Ministry of Natural Resources, Ministry of Northern Development and Mines and The Town of Iroquois Falls

Adopted: 16-Jan-2023  
Print Date: 23-Jan-2023  
JLR No.: 27937